

## How to apply a car window decal:

### 1 Prepare the decal:

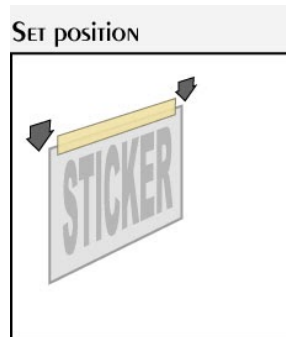
Lay the decal on a flat surface. Scape over the clear mask with the included white scraper card to remove all bubbles and ensure that the white decal is adhered to the clear mask well.

### 2. Clean the area of the car window well:

Use soapy water and let dry. Then clean again with rubbing alcohol to remove all grease and film. This is an important step--a dirty decal is not a sticky decal. DO NOT use windex or other cleaners that leave a residue behind. Do not install out in the broiling hot sun. Find a shady spot out of the wind.

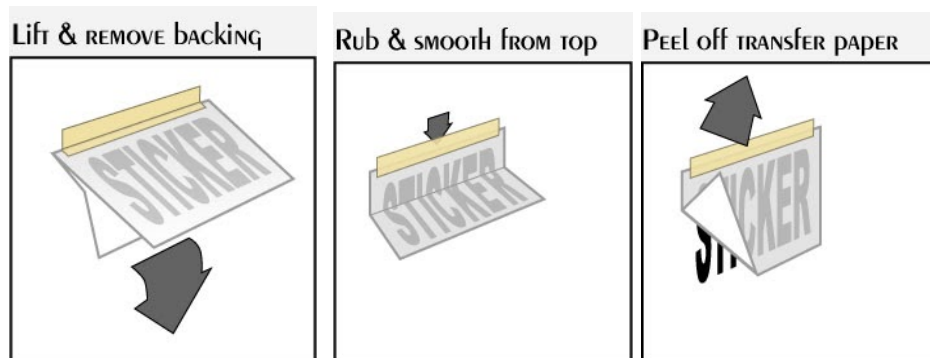
### 3. Determine the location:

Use the decal itself to help you get the right spot. You can use painters tape to attach the decal to the window at the top and make a hinge.



### 4. Peel the backing:

Lift the decal and remove the blue backing. Be careful not to let the decal touch anything. It is super sticky and it is not repositionable. Once it touches the window that's it you can't move it. As a precautionary measure you can spray the spot under the decal with soap water so you can slide the decal around.



### 5. Attach the decal:

Allow the decal to attach to the window from the top down. Use a credit card to rub out all the air bubbles. Scrape the whole decal really well to make sure that it is fully adhered to the window then WAIT.

### 6. WAIT WAIT WAIT a full 30 minutes:

Before trying to remove the clear mask, wait a full 30 minutes. Then start at a top corner and roll the mask down and off the window.